

## CLINICAL VIGNETTE

# Case Study: Systemic Lupus Erythematosus and Antiphospholipid Syndrome in Valvular Heart Disease

Roxana Tabrizi<sup>1</sup> and Kamran Shamsa<sup>2</sup>, M.D.

<sup>1</sup>University of California, Los Angeles; Los Angeles, CA 90095

<sup>2</sup>University of California, Los Angeles; David Geffen School of Medicine; Department of Cardiology; 100 UCLA Medical Plaza, Suite 630 West; Los Angeles, CA 90095

Correspondence:

Kamran Shamsa, M.D.

100 UCLA Medical Plaza, Suite 630 West

Los Angeles, CA 90095

(310) 825- 9011

### **Background**

Systemic lupus erythematosus (SLE) is an autoimmune disorder that is characterized by the production of autoantibodies and immune complexes that direct against a wide variety of a patient's self antigens and leads to inflammation and multi-organ damage.<sup>1,2</sup> The most frequent findings in patients with SLE are inflammation, immune complex deposition, and vasculopathies.<sup>3</sup> It is significant to note a high rate of cardiac involvement, which is estimated to be as high as 50% of SLE patients.<sup>4</sup> One of the most challenging cardiac manifestations of SLE is valvular involvement.<sup>5</sup> Based on transesophageal echocardiogram (TEE) studies, Fluture et al<sup>6</sup> reported that in patients with SLE, thickening of the heart valves is encountered more frequently (51-52%) than valve masses/vegetations (34-43%), with the mitral valve being the most commonly affected valve.<sup>6,7</sup> About 10% of SLE patients develop significant valvular disease, with need for valve surgery in many of these cases.<sup>8</sup> We present a complex case of mitral valve involvement in a patient with SLE and Antiphospholipid Syndrome (APS), and the choice between mechanical versus bioprosthetic valve replacement options.

### **Case Presentation**

The patient has a significant past medical history of SLE and APS, with hypercoagulable state (history of deep venous thrombosis and pulmonary embolism), on chronic anticoagulation therapy. At the age of 20, she was found to have severe mitral regurgitation with a mass noted on her native mitral valve. She underwent mitral valve repair with annuloplasty and closure of a patent foramen ovale. The

following year she experienced hemiparesis from an embolic cerebrovascular accident (CVA), which was attributed to a large mitral valve thrombus. She underwent mitral valve replacement (MVR) with a 27 mm Carpentier-Edwards bovine prosthesis. A bioprosthetic valve was chosen due to patient's high thrombotic risk and development of valvular thrombus while on therapeutic warfarin, making mechanical valve prosthesis less desirable. Due to treatment failure on warfarin, she was maintained on of daily injections of Fondaparinux.

She had done well for three years after bioprosthetic MVR but presents with symptoms of worsening shortness of breath with exertion. The patient underwent transthoracic echocardiogram that revealed severe prosthetic mitral valve stenosis with transmitral mean pressure gradient of 22 mmHg. For reference, mean gradient > 10 mmHg is considered severe mitral stenosis (Figure 1). TEE revealed decreased mobility of the bioprosthetic posterior leaflet and severe stenosis (Figure 2, Figure 3), as well as severe pulmonary hypertension with systolic pulmonary artery pressure of 57 mmHg). All findings were consistent with severe and symptomatic prosthetic mitral valve stenosis.

Given the early failure of the bioprosthetic valve, a mechanical valve was chosen for redo valve surgery. She underwent successful lateral thoracotomy with a 27 mm St. Jude Medical mechanical MVR. Intraoperatively, the bioprosthetic valve was noted to be severely stenotic with small orifice (Figure 4). Due to patient's hypercoagulable state and failure with warfarin therapy, treatment with Fondaparinux was continued with the addition of low dose Aspirin.

## Discussion

This case highlights the effects of the combination of SLE and APS, resulting in severe valvular heart lesions, estimated 300% higher prevalence with degeneration and early failure of bioprosthetic valve.<sup>9</sup> In patients with SLE and APS, the presence of antibodies against cardiolipin can lead to the deposition of immunoglobulins and complement, causing an increase in inflammation and destruction of tissue, which is felt to be the cause of the degeneration of the valve (native or bioprosthetic).<sup>10</sup> The hypercoagulable state of the patient can cause deposition of fibrin and platelets on the valve with immune complex formation, leading to further damage and inflammation.<sup>11-14</sup>

For the general population needing mitral valve replacement, deciding on mechanical versus bioprosthetic valve is challenging. Kaneko et al<sup>15</sup> found the 10 year survival rate for MVR in a propensity matched group of patients under the age of 65 was 57.6% for bioprosthetic valves and 69.2% for mechanical valves. Although there are some cases of MVR in patients with SLE or APS, there are very few case reports discussing the group of patients with both SLE and APS, in which the outcome of MVR is significantly worse.<sup>13,16-17</sup> Our case highlights the many challenges faced in this patient population.

## Conclusion

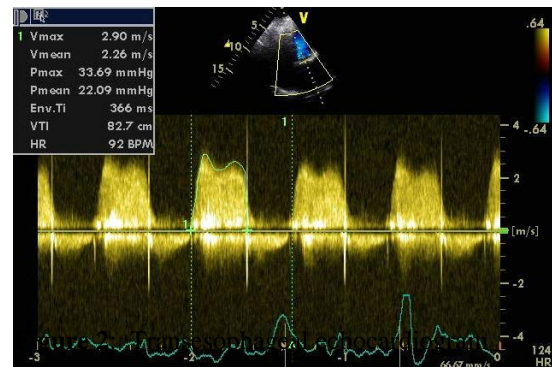
SLE is an autoimmune disease that affects every organ of the body, including the heart. The most significant cardiac involvement is the valvular dysfunction and degeneration due to the inflammatory response from SLE.<sup>18</sup> The prevalence of valvular dysfunction is far greater in patients with both SLE and APS, with significant portion of these patients eventually requiring valve replacement surgery. Both patients and physicians must work together to choose the optimal valve replacement—a bioprosthetic or mechanical valve. The occurrence of early valvulitis and premature degeneration of bioprosthetic valves must be weighed against the risk of mechanical prosthetics' higher risk of thrombosis in patients that are already hypercoagulable.<sup>10</sup> In patients with SLE (with or without APS), mechanical prosthetic valves may be the best option since they will minimize the need for repeat operations due to early failure of bioprosthetic valves brought on by heightened immune response.<sup>18</sup>

In the case presented here, the patient developed early failure of bioprosthetic valve requiring a repeat surgery with mechanical MVR thought to be due to her underlying disease of SLE and APS. Although initial consideration of the bioprosthetic valve seemed to be the safer option for a patient with a hypercoagulable state, a mechanical prosthetic valve in hindsight may have been a more suitable initial choice to withstand the immune complexes and inflammatory response in patients with SLE and APS that so often result in early

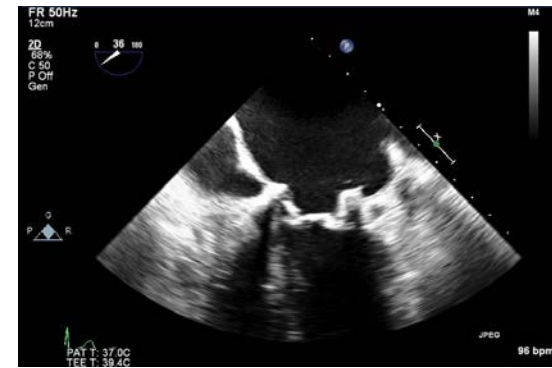
bioprosthetic valve failure. In the future, it would be beneficial to compare the survival rates of patients with both SLE and APS that have undergone valvular replacement with mechanical versus bioprosthetic valves.

## Figure Legends

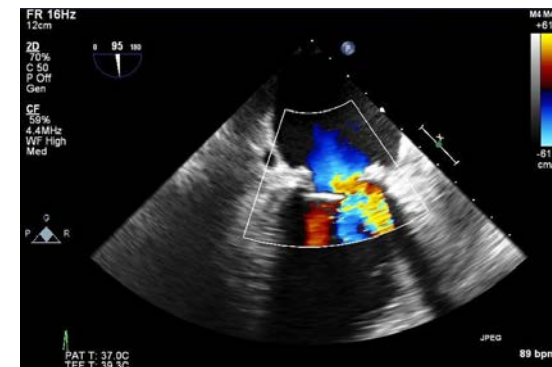
**Figure 1:** Transthoracic echocardiogram with a mean pressure gradient of 22 mmHg



**Figure 2:** Transesophageal echocardiogram



**Figure 3:** Transesophageal echocardiogram with color doppler



**Figure 4A:** Photograph of explanted stenotic mitral valve bioprosthesis (originally a 27 mm bovine mitral valve bioprosthesis), ventricular view



**Figure 4B:** Photograph of explanted stenotic mitral valve bioprosthesis (originally a 27 mm bovine mitral valve bioprosthesis), atrial view



## REFERENCES

1. **Lee YH, Bae SC, Choi SJ, Ji JD, Song GG.** Genome-wide pathway analysis of genome-wide association studies on systemic lupus erythematosus and rheumatoid arthritis. *Mol Biol Rep.* 2012 Dec;39(12):10627-35. doi: 10.1007/s11033-012-1952-x. Epub 2012 Oct 7. PubMed PMID: 23053960.
2. **de Godoy MF, de Oliveira CM, Fabri VA, de Abreu LC, Valenti VE, Pires AC, Raimundo RD, Figueiredo JL, Bertazzi GR.** Long-term cardiac changes in patients with systemic lupus erythematosus. *BMC Res Notes.* 2013 May 1;6:171. doi: 10.1186/1756-0500-6-171. PubMed PMID: 23635330; PubMed Central PMCID: PMC3679986.
3. **Mok CC, Lau CS.** Pathogenesis of systemic lupus erythematosus. *J Clin Pathol.* 2003 Jul;56(7):481-90. Review. PubMed PMID: 12835292; PubMed Central PMCID:PMC1769989.
4. **Ottaviani G.** Histopathological study of the cardiac conduction system in systemic lupus erythematosus. *Journal of Postgraduate Medicine* 2006;52(1):10.
5. **Ansari A, Larson PH, Bates HD.** Vascular manifestations of systemic lupus erythematosus. *Angiology.* 1986 Jun;37(6):423-32. PubMed PMID: 3729068.
6. **Fluture A, Chaudhari S, Frishman WH.** Valvular heart disease and systemic lupus erythematosus: therapeutic implications. *Heart Dis.* 2003 Sep-Oct;5(5):349-53. Review. PubMed PMID: 14503933.
7. **Hakim JP, Mehta A, Jain AC, Murray GF.** Mitral valve replacement and repair. Report of 5 patients with systemic lupus erythematosus. *Tex Heart Inst J.* 2001;28(1):47-52. Review. PubMed PMID: 11330742; PubMed Central PMCID: PMC101131.
8. **Perez-Villa F, Font J, Azqueta M, Espinosa G, Pare C, Cervera R, Reverter JC, Ingelmo M, Sanz G.** Severe valvular regurgitation and antiphospholipid antibodies in systemic lupus erythematosus: a prospective, long-term, followup study. *Arthritis Rheum.* 2005 Jun 15;53(3):460-7. PubMed PMID: 15934103.
9. **Zuily S, Regnault V, Selton-Suty C, Eschwège V, Bruntz JF, Bode-Dotto E, De Maistre E, Dotto P, Perret-Guillaume C, Lecompte T, Wahl D.** Increased risk for heart valve disease associated with antiphospholipid antibodies in patients with systemic lupus erythematosus: meta-analysis of echocardiographic studies. *Circulation.* 2011 Jul 12;124(2):215-24. doi: 10.1161/CIRCULATIONAHA.111.028522. Epub 2011 Jun 20. PubMed PMID: 21690492.
10. **Vassileva CM, Swong MN, Boley TM, Markwell SJ, Hazelrigg SR.** Influence of systemic lupus erythematosus on procedure selection and outcomes of patients undergoing isolated mitral valve surgery. *J Card Surg.* 2012 Jan;27(1):29-33. doi: 10.1111/j.1540-8191.2011.01393.x. PubMed PMID: 22321110.
11. **Berkun Y, Elami A, Meir K, Mevorach D, Naparstek Y.** Increased morbidity and mortality in patients with antiphospholipid syndrome undergoing valve replacement surgery. *J Thorac Cardiovasc Surg.* 2004 Feb;127(2):414-20. PubMed PMID: 14762349.
12. **Jain D, Halushka MK.** Cardiac pathology of systemic lupus erythematosus. *J Clin Pathol.* 2009 Jul;62(7):584-92. doi: 10.1136/jcp.2009.064311. Review. PubMed PMID: 19561227.
13. **Bouma W, Klinkenberg TJ, van der Horst IC, Wijdh-den Hamer IJ, Erasmus ME, Bijl M, Suurmeijer AJ, Zijlstra F, Mariani MA.** Mitral valve surgery for mitral regurgitation caused by Libman-Sacks endocarditis: a report of four cases and a systematic review of the literature. *J Cardiothorac Surg.* 2010 Mar 23;5:13. doi: 10.1186/1749-8090-5-13. Review. PubMed PMID: 20331896; PubMed Central PMCID:PMC2859362.

14. **Zuily S, Huttin O, Mohamed S, Marie PY, Selton-Suty C, Wahl D.** Valvular heart disease in antiphospholipid syndrome. *Curr Rheumatol Rep.* 2013 Apr;15(4):320. doi: 10.1007/s11926-013-0320-8. Review. PubMed PMID: 23456852.
15. **Kaneko T, Aranki S, Javed Q, McGurk S, Shekar P, Davidson M, Cohn L.** Mechanical versus bioprosthetic mitral valve replacement in patients <65 years old. *J Thorac Cardiovasc Surg.* 2014 Jan;147(1):117-26. doi:10.1016/j.jtcvs.2013.08.028. Epub 2013 Sep 27. PubMed PMID: 24079878.
16. **Colli A, Mestres CA, Espinosa G, Plasín MA, Pomar JL, Font J, Cervera R.** Heart valve surgery in patients with the antiphospholipid syndrome: analysis of a series of nine cases. *Eur J Cardiothorac Surg.* 2010 Jan;37(1):154-8. doi:10.1016/j.ejcts.2009.06.046. Epub 2009 Aug 20. PubMed PMID: 19699100.
17. **Erdozain JG, Ruiz-Irastorza G, Segura MI, Amigo MC, Espinosa G, Pomar JL, Perez-Valero I, Ateka-Barrutia O, Khamashta MA.** Cardiac valve replacement in patients with antiphospholipid syndrome. *Arthritis Care Res (Hoboken).* 2012 Aug;64(8):1256-60. doi: 10.1002/acr.21670. PubMed PMID: 22422594.
18. **Dandekar UP, Watkin R, Chandra N, Santo KC, Bhudia S, Pitt M, Rooney SJ.** Aortic valve replacement for Libman-Sacks endocarditis. *Ann Thorac Surg.* 2009 Aug;88(2):669-71. doi: 10.1016/j.athoracsur.2008.11.074. PubMed PMID: 19632441.

*Submitted on September 24, 2014*